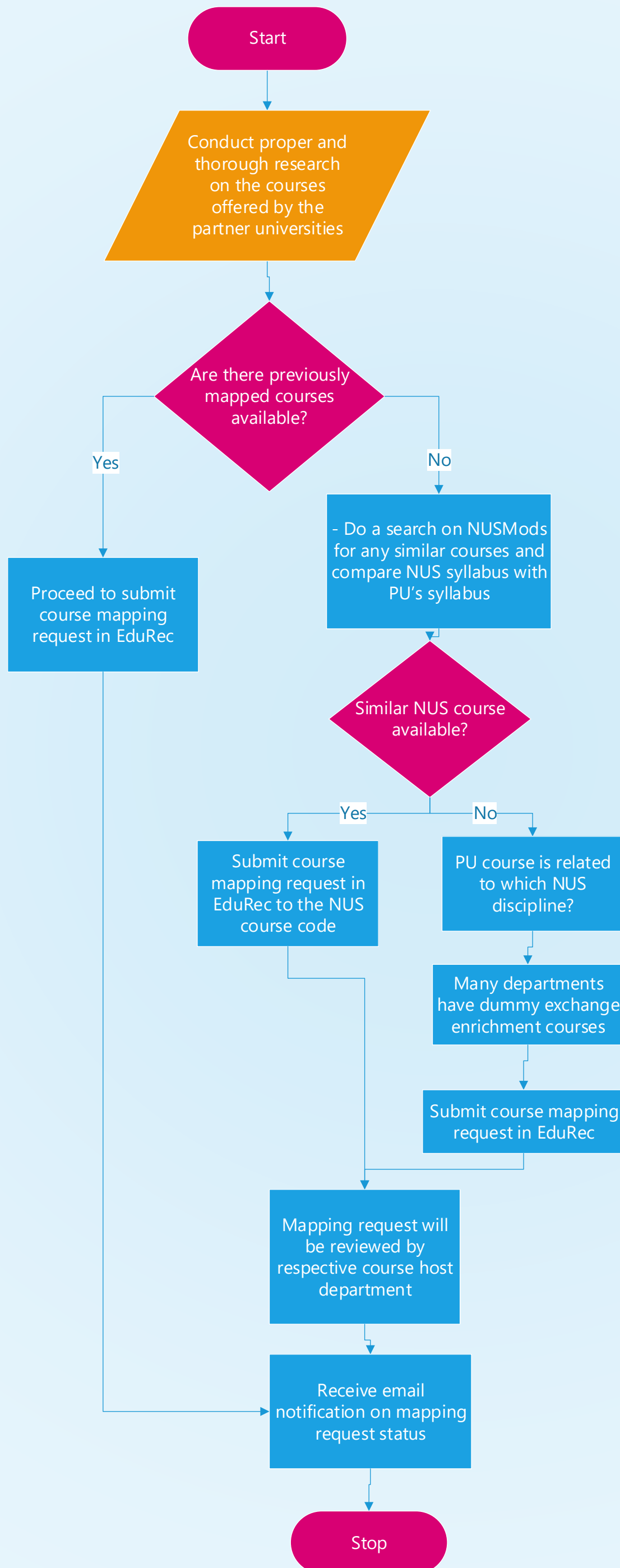


Course Mapping Guide



Note 1: General guideline for mapping to existing NUS courses
A) Subject content of the SEP and NUS course has a similarity of $\geq 70\%$
B) Each 4 units NUS course will require ~ 130 hours of effort

Note 2:
Take note of course mapping restrictions as outlined in the 'General Instructions on Course Mapping' section below

Note 3:
There is **no generic NUS Dummy course code**.

Note 4:
The decision to approve or reject your proposed course mapping rests with the Department SEP Coordinators and **their decision is final**. The approval process will take at **least 2 – 3 weeks**.

General Instructions on Course Mapping

Cohort AY2021/2022 and after

1. Conduct proper and thorough research on the courses offered by the undergraduate student exchange partner universities (PUs).
 - A list of the partner universities' courses mapped successfully in the immediate past academic year is made available on [FoS SEP website](#). Students are to note that this list is **ONLY FOR REFERENCE** and does not constitute a blanket approval for all the courses on the list.
 - You may also refer to the course mappings in EduRec (refer to the [Course Mapping Guide](#) for instructions). Do note that the list in EduRec does not update automatically and is also **ONLY FOR REFERENCE**.
2. Do a search on NUSMods for any similar courses and compare NUS syllabus with PU's syllabus. Do take the advice of the Department SEP Coordinator and Course Coordinators constructively and likewise for faculties/committees/professors who have responded to your queries for course mapping. [The decision to approve or reject your proposed course mapping rests with the Department SEP Coordinators and their decision is final.](#)
3. All course mapping requests are to be submitted via EduRec. Please refer to the [Course Mapping Guide](#) for instructions. Ensure that information such as topics covered, reading list, course objectives etc. are included in your mapping request in order for the departments to review.

To facilitate processing of your course mapping request, please provide the URL to course details when submitting your course mapping requests to support the information provided.

Do note that some universities websites will require login details or have no direct URL link to specific courses. To provide the course details URL for such websites, please save the website to a PDF format via Print -> Save as PDF. Upload the document to a document sharing platform of your choice (e.g. Google Drive, OneDrive etc) and provide the sharing link instead.

Please check the mapping worksheet for comments, even if it is approved as there may be conditions to it or it may be approved to another course level.

4. There are 3 types of mappings in EduRec – One to One, One to Many, Many to One.
 - a. One to One is the most common mapping type and is used when one PU course is mapped to one NUS course.
 - b. One to Many is used when the PU course has a heavy workload and has content that is covered by many NUS courses. For example, if the PU course is 15 ECTS, it may be mapped to two 4-unit NUS courses, given that the content is similar enough to both NUS courses.
 - c. Many to One is used when the content/workload of the PU course is insufficient to be mapped to a NUS course and requires at least one more relevant PU course to supplement the mapping.

Please **do not** use One to Many and Many to One mapping types if the conditions stated above are not met. For example, do not submit a One to Many mapping if you are unsure of what NUS course a particular PU course can be mapped to. In such cases, submit a One to One mapping to the NUS course that you deem is the most similar.

5. Academic workload while on SEP should be identical to a regular NUS semester i.e. students are expected to transfer a normal workload of 20 units per semester of 13 weeks (for information about the expected workload, refer to [Unit Ratio](#)). There is no restriction on the number of courses that should be taken to fulfil the programme (major and faculty) requirement. Students are however reminded of the NUS' residency requirement stipulated on the [Office of the University Registrar \(OUR\)'s website](#). In addition, students should note that there is a restriction to the number of units from SEP/SUSEP or summer/winter programmes which they can transfer to fulfil their [Programme/Major/Second Major/Minor/Specialisation](#).
6. In general, course mapping will be approved when the following conditions are met:
 - a) Subject content of the PU course and NUS course has a similarity of $\geq 70\%$, and
 - b) As a general guide, each 4-unit NUS course will require ~ 130 hours of effort.
 - c) You have read and passed the pre-requisite to the NUS course you are mapping to.

The final decision will lie with the Department SEP Coordinators for department courses.

7. Dummy course codes may be used when there are no similar courses but related to a discipline in NUS. The first digit indicates the course level. Dummy courses will not be eligible as pre-requisite for NUS courses. There is **no generic NUS Dummy course code**. Students should try to map the course to the closest matching NUS department dummy course code. **FASS**: There are dummy codes in every FASS major, which can be identified by a 7 in the second digit e.g. PS2741. **FOS**: There are dummy codes in every Science major, except for Data Science & Analytics major and Data Science & Economics Cross-Disciplinary Programme. Dummy codes are in the format x99x e.g. FST1991, PR2991.
8. Onus is on students to initiate credit transfer upon return from overseas programmes. The Faculty will not be responsible for any failure to transfer the credits that you have earned at partner university.

Instructions for Science Primary/Second Majors and minor

1. Mapping of one partner university course to two NUS courses (and vice versa) is permitted. However, mapping of one partner university course to two NUS courses across two major programmes or vice versa is not allowed, e.g. mapping of course A from partner university X to LSM1301 and CM1401 is not allowed.
2. Assignment of units will be based on a combination of course content, official and informal contact hours, and average workload of students at the respective partner university. As a general guide, each 4-unit NUS course will require ~130 hours of effort.
3. Science undergraduate students from the below Science majors are allowed to map **ONE** of the below major-coded dummy course to fulfil major requirements. This dummy course must be an elective course, not an essential (compulsory) course, within the major requirements.

Programme	Exchange Enrichment Course
Biological Sciences	LSM3991 or LSM4991
Chemistry	CM3991 or CM4991
Environmental Studies XDP [#]	ENV2991 or ENV3991 or ENV4991
Food Science & Technology	FST4991 (for specialisation only)
Pharmaceutical Science	PHS4991
Physics	PC3991 or PC4991

[#]For BES-XDP, a maximum of **two** exchange enrichment courses can be counted towards BES Major requirements. Refer to [BES website](#) for more information.

When two (2) of the above major-coded dummy courses are mapped, the second course (third for BES-XDP) onwards will be counted towards Unrestricted Electives (UEs). Mapping of all other major-coded dummy courses not listed above will be counted towards Unrestricted Electives (UEs).

4. Life Sciences Courses

Pre-requisites

Students are not required to have read and passed the pre-requisite NUS course to map the higher-level course. However, students should note that if they intend to read the higher-level NUS course after returning from the study abroad programme, without having read and passed the pre-requisite NUS course, they will face problems during CourseReg as they have not fulfilled the pre-requisite.

For example, if you have not read and passed LSM2105, you will still be able to map LSM3227. However, if you wish to read LSM4225 back in NUS after completing the overseas programme, you will not be able to register for LSM4225 in CourseReg since you have not completed LSM2105.

Do note however that students are not encouraged to map courses which pre-requisites have not been fulfilled.

Courses not allowed to be mapped

LSM2105 - Molecular Genetics, LSM4263 - Field Studies in Biodiversity, LSM4351 - Vegetation and Plant Diversity of Southeast Asia and LSM4352 - Sustainable Urban Food Production for Food Security, are not allowed to be mapped. Courses not offered in the academic year which the student is going for exchange are not allowed to be mapped as well.

LSM Exchange Enrichment Course Codes

The department has a variety of different exchange enrichment course codes of various levels and units. Please select the appropriate level and credit for mapping to your partner university courses. (e.g. Only a Year 3 (and above) life sciences PU course with credit equivalence to 4 NUS units can be mapped to LSM3991). Do note that not all courses with key words relevant to the life sciences are life sciences courses (e.g. courses with 'sustainability' or 'environmental' can be from another discipline).

Mapping to LSM4991 is reserved only for graduate courses from our partner universities.

5. Environmental Studies Courses

- ENV dummy codes are only allowed to be used by BES-XDP students.

6. Statistics and Data Science Courses

- DSA2101 and DSA3101 are not allowed to be mapped on study abroad programmes.
- DSA1101 may not be mapped to winter or summer school overseas courses.
- Effective from AY2024/2025 Special Term, **ALL DSA/ST courses** hosted by the Department of Statistics and Data Science are not allowed to be mapped to **winter or summer school** overseas courses.
- Effective from AY2025/2026, ST2137, DSA3361 and DSA3362 are not allowed to be mapped on study abroad programmes.

7. Data Science and Economics XDP Courses

- DSE3101 is not allowed to be mapped on study abroad programmes.

8. Chemistry Courses

- **IMPORTANT:** Any NUS student with H2 Chemistry is **NOT allowed to map/take CM1417**, as stated in the [Chemistry Course Listing](#), and thus the respective course mapping is not valid for students who have taken H2 Chemistry. H1 Chemistry students can map/take CM1417. PLEASE CHECK CAREFULLY, otherwise credits will not be transferred even if you have completed the equivalent PU course.
- All NUS level 1000 and level 2000 chemistry courses, CM1102, CM2112, CM2122, CM2133 and CM2143 are NOT allowed to be mapped.
- The mapping requirement for NUS level 3000 chemistry "essential" courses (including CM3111, CM3121, CM3131, CM3141, CM3191 and CM3192) will be more demanding (> 80% similarity in syllabus with the same standard) than the chemistry electives courses offered in NUS level 3000 and above.
- For chemistry-major, course mapping to NUS level 5000 chemistry course will NOT be counted into graduation requirement (For details, refer [here](#)). As level 5000 courses cannot be selected in the course mapping worksheet, please seek email approval from the Chemistry SEP coordinator. To request for credit transfer, submit the email approval along with your transcript.

9. Mathematics Courses

- Core engineering mathematics courses, including MA1505, MA1508E, MA1511, MA1512, and MA1513, are not allowed to be mapped.
- MA4291 and MA4292 are not allowed to be mapped on study abroad programmes.
- Graduate courses cannot be selected in the course mapping worksheet. For mapping of graduate courses, please seek email approval from the Mathematics SEP coordinator. To request for credit transfer, submit the email approval along with your transcript.

10. Special Programme in Science (SPS) Courses – SP2271, SP2273, SP2274, SP3172, SP3176, SP3275:
Mapping is not allowed.

11. UROPS courses for Research Conducted at Partner University during SEP:

Types of Research	Proposed actions
Research <u>without</u> official course code	Not allowed to map back to any course in NUS.
Research course in the Partner University (with course code and/or title and reflected in student’s transcript upon successful completion)	<ul style="list-style-type: none"> • Student may check with their department whether the research course can be mapped to the department’s UROPS course code. Provide the department with: <ol style="list-style-type: none"> i. the project details, ii. duration of project, and iii. assessment components. • If mapping to UROPS is approved, only credits will be transferred. • If mapping to UROPS is not approved, mapping to a Science dummy module (SX code) may be considered. • Mapping request will not be considered simply because the student has completed the research stint at the partner university.

Instructions for Arts Primary/Second Majors and minor

1. Use only one-to-one mapping of SEP course to NUS course.
2. Assignment of units will be done by the [Unit Ratio](#) based on your total study plan, and not the workload of the course. Units or course codes will not be awarded as per reflected in EduRec even if it is approved if you do not earn enough credits, e.g. 5 ECTS will not be 4 units.
3. If you are using SEP courses to fulfil your major basket/sub-field/region/theme, you will need to check with the department if it can be approved to the respective basket/sub-field/region/theme.
4. Focus on 1-2 degree requirements and within the major, focus on 1 level. E.g. Major (all L3000) or/and UE.
5. Refer to [FASS website](#) for details on mapping restrictions.

Restrictions/Additional Instructions for Course Mapping

12. Mapping of College of Humanities and Sciences Common Curriculum courses

- Students are strongly encouraged to complete all CHS Common Curriculum courses in their first two years of study except for the Communities and Engagement course and two Interdisciplinary courses.
- CHS courses are uniquely created in NUS and in general will be difficult to map

Pillar	Courses	Remarks
Writing	FAS1101, SP1541, SP2271	Cannot map
Data Literacy	GEA1000, BT1101	Possible to map
Digital Literacy	GEI1001, GEI1002, NM2207, CS1010x, CS1101S, COS1000, CM3267, ZB2201, SP2273	Possible to map (Except for SP2273)
Design Thinking	DTK1234	Cannot map
Artificial Intelligence	HS1501, HS1502, IT1244, CS2109S	HS1501, HS1502: Cannot map IT1244: Possible to map CS2109S: Check with SOC
Communities and Engagement		^Refer to remarks below
Integrated Asian Studies	HSA1000	Cannot map
Integrated Social Sciences	HSS1000	Cannot map
Integrated Humanities	HSH1000	Cannot map
Scientific Inquiry 1	HSI1000	Cannot map
Scientific Inquiry 2	HSI20xx	Cannot map
Interdisciplinary Course 1 & 2	HS29xx	Cannot map

^ Students are advised to read the C&E course/course in NUS as it will be difficult to map from taking overseas courses. For course mapping, the learning objectives of the C&E course needs to be met. For further enquiries, please email to AskCnE@nus.edu.sg.

13. **Language Courses:** Refer to [CLS website](#) for information.

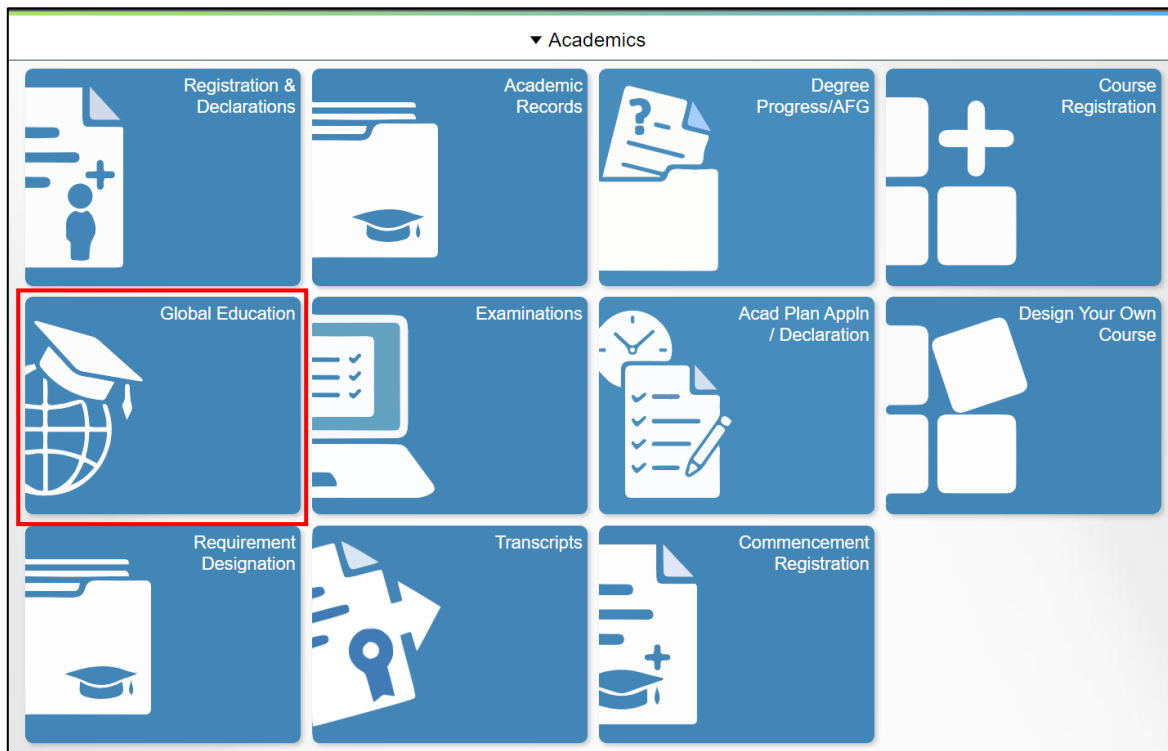
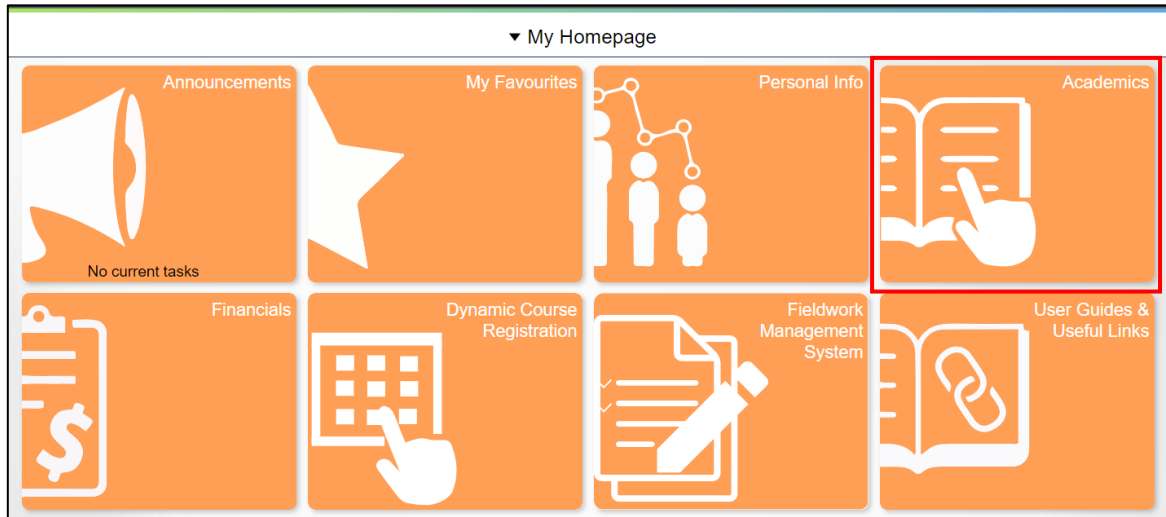
14. **Business Courses:** NUS Business School does not assign dummy course codes. Students may only request for mapping of NUS equivalent courses offered by the NUS Business School. For mapping of BIZ courses not found on the Course Mapping list in EduRec, please refer to [BIZ website](#) for more details and instructions.

15. **Music Courses:** Yong Siew Toh Conservatory does not assign dummy course codes. Students may only request for mapping of NUS equivalent courses offered by the Yong Siew Toh Conservatory.

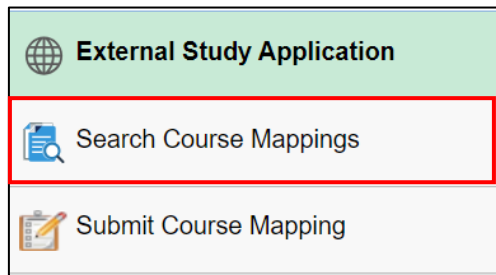
Annex A

To Search Course Mappings in EduRec

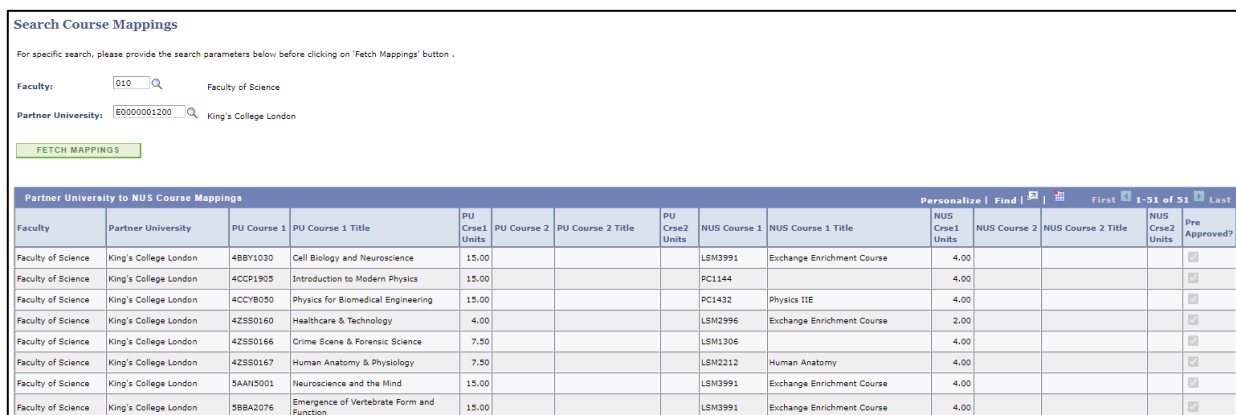
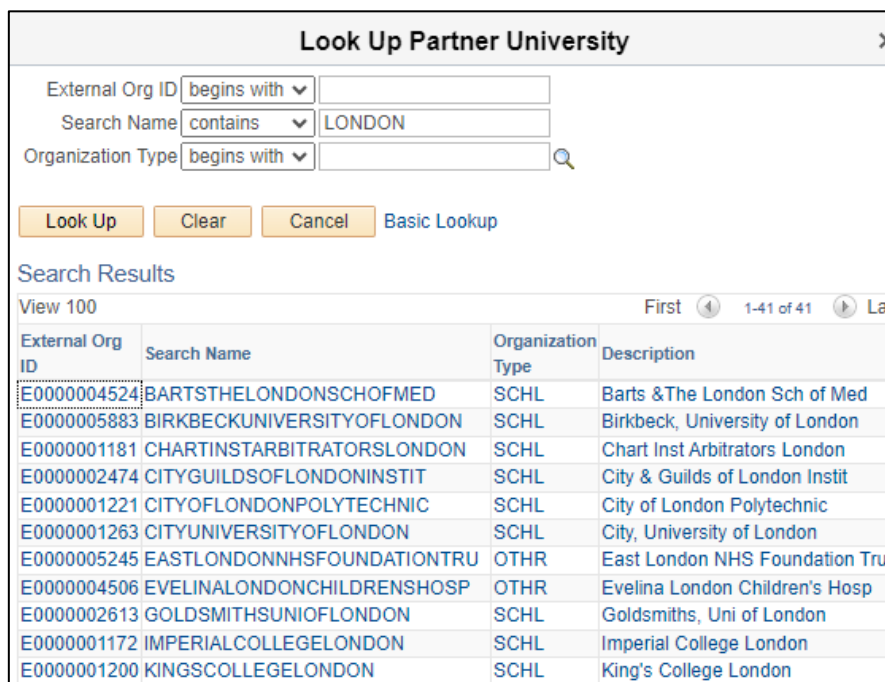
1. Navigate to **My Homepage > Academics > Global Education**.



2. If you wish to search for suitable course mappings for reference, select 'Search Course Mappings' on the left-hand menu.



3. Select the Faculty and Partner University you would like to see the course mappings using the button:



To search for a department's dummy exchange course in the course mapping worksheet in EduRec

- 1) Key in 'Course Subject Area'

NUS Course

*Course Subject Area:

*Course Catalog Nbr:

Course ID:

Offer Nbr:

Course Title:

Units/Credits:

- 2) Click on the magnifying glass

NUS Course

*Course Subject Area:

*Course Catalog Nbr:

Course ID:

Offer Nbr:

Course Title:

Units/Credits:

- 3) Select the course code based on the number of units that you would like to map to. Different department has different course code, hence look at the course description as shown below.

Look Up *Course Catalog Nbr				
2991	009860 1	4	Exchange Enrichment Course	Approved 01001ACAD1
2992	010719 1	4	Exchange Enrichment Course	Approved 01001ACAD1
3991	002056 1	4	Exchange Enrichment Course	Approved 01001ACAD1
3992	009970 1	4	Exchange Enrichment Course	Approved 01001ACAD1
3993	010676 1	4	Exchange Enrichment Course	Approved 01001ACAD1
3994	015994 1	2	Exchange Enrichment Course	Approved 01001ACAD1
2723	011845 1	2	Department Exchange Course	Approved 00104ACAD1
2731	013492 1	3	Department Exchange Course	Approved 00104ACAD1
2741	000858 1	4	Department Exchange Course	Approved 00104ACAD1
2742	000859 1	4	Department Exchange Course	Approved 00104ACAD1

Last updated: 14 February 2025

Note: All information is subjected to change. Please refer to the [FoS SEP website](#) for the latest information.