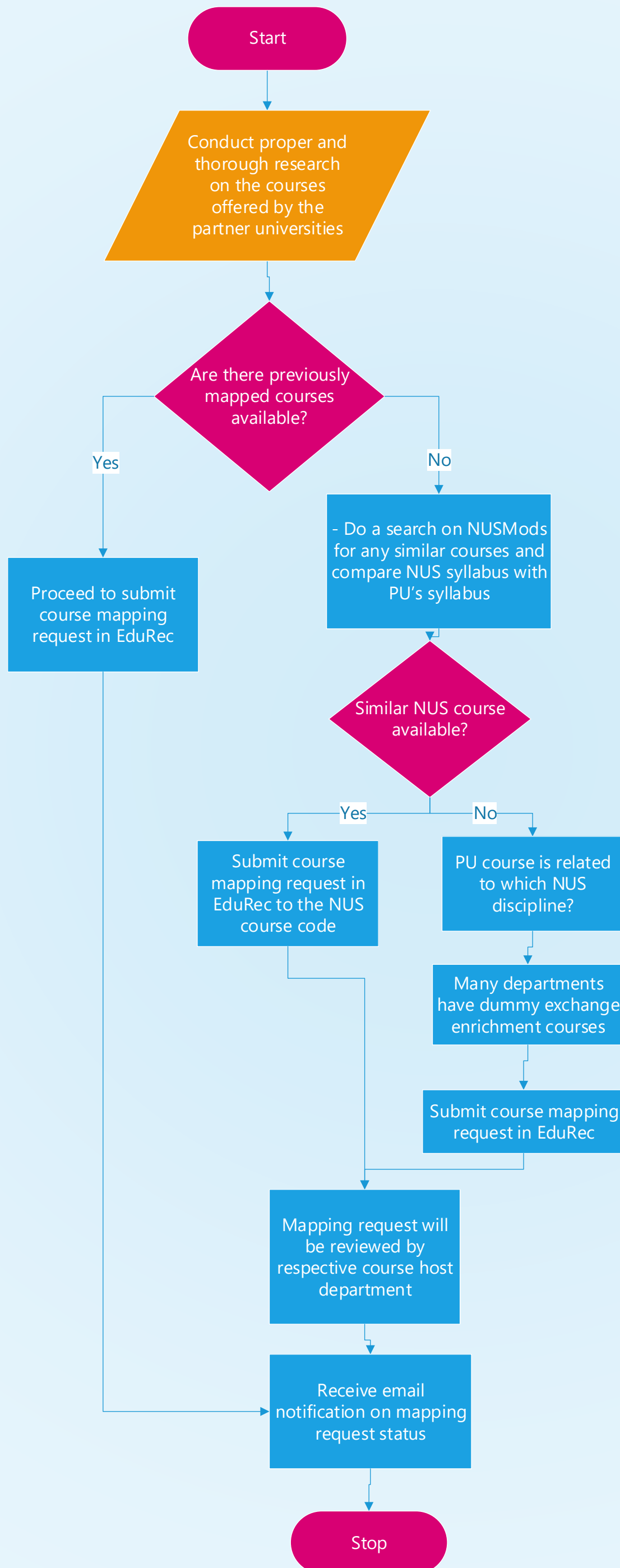


Course Mapping Guide



Note 1: General guideline for mapping to existing NUS courses
A) Subject content of the SEP and NUS course has a similarity of $\geq 70\%$
B) Each 4 units NUS course will require ~ 130 hours of effort

Note 2:
Take note of course mapping restrictions as outlined in the 'General Instructions on Course Mapping' section below

Note 3:
There is **no generic NUS Dummy course code**.

Note 4:
The decision to approve or reject your proposed course mapping rests with the Department SEP Coordinators and **their decision is final**. The approval process will take at **least 2 – 3 weeks**.

General Instructions on Course Mapping

Cohort AY2020/2021 and before

1. Conduct proper and thorough research on the courses offered by the undergraduate student exchange partner universities (PUs).
 - A list of the partner universities' courses mapped successfully in the immediate past academic year is made available on [NUS Science website](#). Students are to note that this list is **ONLY FOR REFERENCE** and does not constitute a blanket approval for all the courses on the list.
2. Do a search on NUSMods for any similar courses and compare NUS syllabus with PU's syllabus. Do take the advice of the Department SEP Coordinator and Course Coordinators constructively and likewise for faculties/committees/professors who have responded to your queries for course mapping. [The decision to approve or reject your proposed course mapping rests with the Department SEP Coordinators and their decision is final.](#)
3. All course mapping requests are to be submitted via EduRec. Please refer to the [Course Mapping Guide](#) for instructions. Please do not submit multiple request for the same course. If you do not know what to map to, request for the most desired first. Ensure that information such as topics covered, reading list, course objectives etc. are included in your mapping request in order for the departments to review. Please check the mapping worksheet for comments, even if it is approved as there might be conditions to it or it might be approved to another course level.
4. Academic workload while on SEP should be identical to a regular NUS semester i.e. students are expected to transfer a normal workload of 20 units per semester of 13 weeks (for information about the expected workload, refer to [Unit Ratio](#)). There is no restriction on the number of courses (or percentage) that should be taken to fulfil the programme (major and faculty) requirement. Students are however reminded of the NUS' residency requirement stipulated on the [Registrar's Office website](#). In addition, students should note that there is a restriction to the number of units from SEP/SUSEP or summer/winter programmes which they can transfer to fulfil their [primary major/ 2nd major/minor](#).
5. In general, course mapping will be approved when the following conditions are met:
 - a) Subject content of the PU course and NUS course has a similarity of $\geq 70\%$, and
 - b) As a general guide, each 4-unit NUS course will require ~ 130 hours of effort.
 - c) You have read and passed the pre-requisite to the NUS course you are mapping to.

The final decision will lie with the Department SEP Coordinators for department courses.

6. Assignment of units will be based on a combination of course content, official and informal contact hours, and average workload of students at the respective partner university.
7. Mapping of one partner university course to two NUS courses (and vice versa) is permitted. However, mapping of one partner university course to two NUS courses across two major programmes or vice versa is not allowed, e.g. mapping of course A from partner university X to LSM1301 and CM1401 is not allowed.

8. Dummy course codes may be used when there are no similar courses but related to a discipline in NUS. The first digit indicates the course level. Dummy courses will not be eligible as pre-requisite for NUS courses. There is **no generic NUS Dummy course code**. Students should try to map the course to the closest matching NUS department dummy course code. **FASS**: There are dummy codes in every FASS major, which can be identified by a 7 in the second digit e.g. PS2741. **FOS**: There are dummy codes in every Science major, except for Data Science & Analytics major and Data Science & Economics Cross-Disciplinary Programme. Dummy codes are in the format x99x e.g. FST1991, PR2991.
9. Onus is on students to initiate credit transfer upon return from overseas programmes. The Faculty will not be responsible for any failure to transfer the credits that you have earned at partner university.

10. Dummy Courses to Fulfil Major Requirements

Except for students majoring in Pharmacy, Computational Biology, and Data Science and Analytics, all Science undergraduate students are allowed to map **ONE** 4-unit major-coded dummy course (i.e. xx3991 or xx4991) to fulfil major requirements. This dummy course must be an elective course, not an essential (compulsory) course, within the major requirements.

For example, CM major can map only ONE CM3991 or ONE CM4991 to fulfil his/her Level 3000 or Level 4000 major requirements. Appeal to map more than one major-coded dummy course to fulfil major requirements will not be considered.

Programme	Exchange Enrichment Course
Biological Sciences	LSM3991
Chemistry	CM3991 or CM4991
Environmental Studies (Biology)	To check with BES Administrator.
Food Science and Technology	FST3991 or FST4991
Mathematics	MA3991 or MA4991
Pharmaceutical Sciences	PHS3991
Physics	PC3991 or PC4991
Quantitative Finance	QF3991 or QF4991
Statistics	ST3991 or ST4991

When two (2) of the above major-coded dummy courses are mapped, the second course onwards will be counted towards Unrestricted Electives (UEs). Mapping of all other major-coded dummy courses not listed above will be counted towards Unrestricted Electives (UEs).

11. Life Sciences Courses

It is not required to have read and pass the pre-requisite NUS course to map the higher-level course. However, students should note that if they intend to read the higher-level NUS course after returning from the study abroad programme, without having read and pass the pre-requisite NUS course, they will face problems during CourseReg as they have not fulfilled the pre-requisite.

12. Data Science Courses

- DSA2101 and DSA3101 are not mappable on all study abroad programmes
- DSA1101 may not be mapped to winter or summer school overseas courses

13. Chemistry Courses

- The mapping requirement for NUS level-3000 chemistry “essential” courses (including CM3111, CM3121, CM3131, CM3141, CM3191 and CM3192) will be more demanding (> 80% similarity in syllabus with the same standard) than the chemistry electives courses offered in NUS level-3000 and above

14. Mathematics Courses

- MA4291 and MA4292 are not mappable on study abroad programmes

15. Special Programme in Science (SPS) courses: Mapping is not allowed.

16. UROPS courses for Research Conducted at Partner University during SEP:

Types of Research	Proposed actions
Research <u>without</u> official course code	Not allowed to map back to any course in NUS.
Research course in the Partner University (with course code and/or title and reflected in student’s transcript upon successful completion)	<ul style="list-style-type: none">• Student may check with their department whether the research course can be mapped to the department’s UROPS course code. Provide the department with:<ol style="list-style-type: none">i. the project details,ii. duration of project, andiii. assessment components.• If mapping to UROPS is approved, only credits will be transferred.• If mapping to UROPS is not approved, mapping to a Science dummy course (SX code) may be considered.• Mapping request will not be considered simply because the student has completed the research stint at the partner university.

Restrictions/Additional Instructions for Course Mapping

17. **General Education Courses (GEMs):** Students admitted from AY15/16 onwards, are not allowed to map courses read at the partner university while on Student Exchange Programme/Summer/Winter Programme as GEMs to fulfil the GE requirement. Students admitted before AY15/16, please refer to the Registrar's Office [website](#) for details.

18. **Mapping of College of Humanities and Sciences Common Curriculum courses** (for unrestricted elective)

- CHS courses are uniquely created in NUS and in general will be difficult to map

Pillar	Courses	Remarks
Writing	FAS1101, SP1541, SP2271	Cannot map
Data Literacy	GEA1000, BT1101	Possible to map
Digital Literacy	GEI1001, GEI1002, NM2207, CS1010x, CS1101S, COS1000, CM3267, LSM2302, SP2273	Possible to map (Except for SP2273)
Design Thinking	DTK1234	Cannot map
Artificial Intelligence	HS1501, IT1244, CS2109S	HS1501: Cannot map IT1244: Possible to map CS2109S: Check with SOC
Communities and Engagement	GEN	Possible to map
Integrated Asian Studies	HSA1000	Cannot map
Integrated Social Sciences	HSS1000	Cannot map
Integrated Humanities	HS1000	Cannot map
Scientific Inquiry 1	HSI1000	Cannot map
Scientific Inquiry 2	HSI20xx	Cannot map
Interdisciplinary Course 1 & 2	HS29xx	Cannot map

19. **FASS Courses:** Refer to [FASS](#) for details on mapping restrictions

20. **Language Courses:** Refer to [CLS](#) for information.

21. **Business Courses:** NUS Business School does not assign dummy course codes. Students may only request for mapping of NUS equivalent courses offered by the NUS Business School. For mapping of BIZ courses not found on the Course Mapping list in EduRec, please refer to [BIZ](#) for more details and instructions.

22. **Music Courses:** Yong Siew Toh Conservatory does not assign dummy course codes. Students may only request for mapping of NUS equivalent courses offered by the Yong Siew Toh Conservatory.

Annex A

To search for a department’s dummy exchange course in the course mapping worksheet in EduRec

- 1) Key in ‘Course Subject Area’

NUS Course

*Course Subject Area:

*Course Catalog Nbr:

Course ID:

Offer Nbr:

Course Title:

Units/Credits:

- 2) Click on the magnifying glass

NUS Course

*Course Subject Area:

*Course Catalog Nbr:

Course ID:

Offer Nbr:

Course Title:

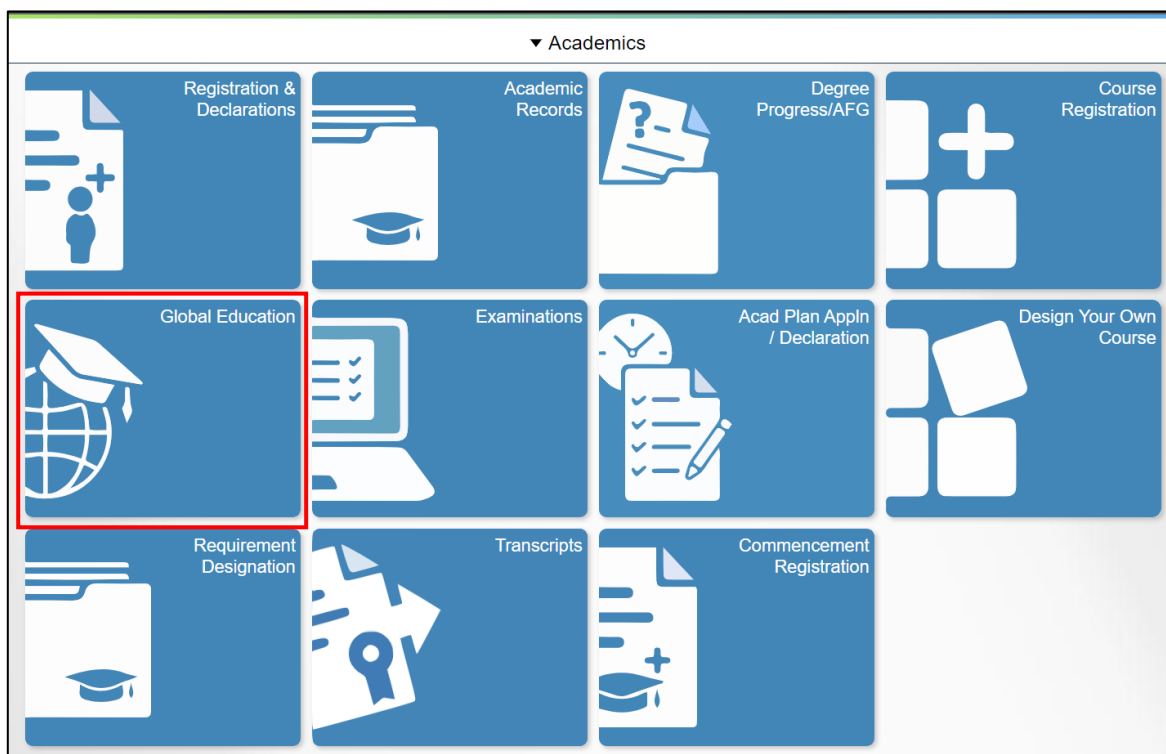
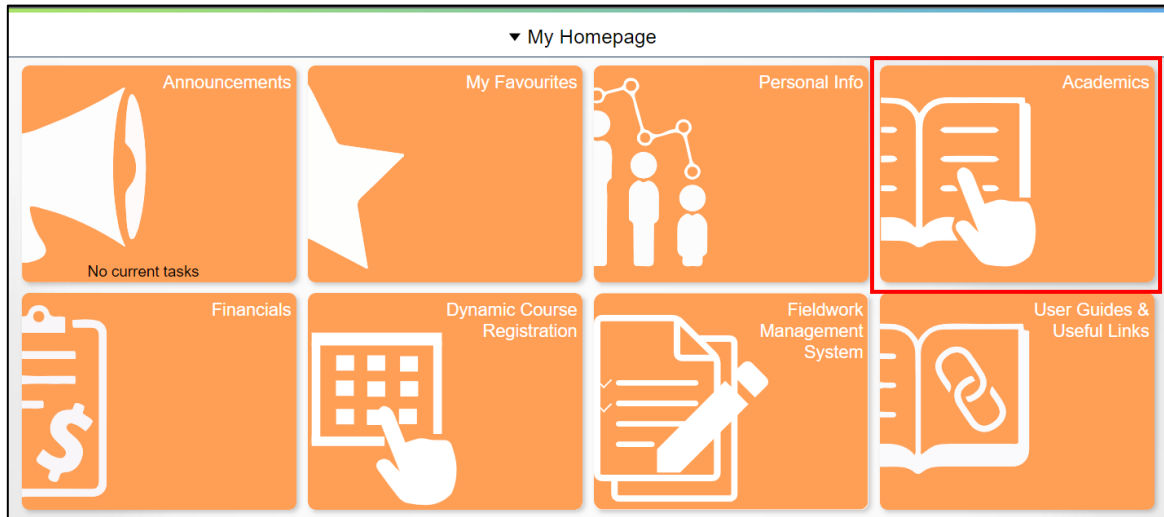
Units/Credits:

- 3) Select the course code based on the number of units that you would like to map to. Different department has different course code, hence look at the course description as shown below.

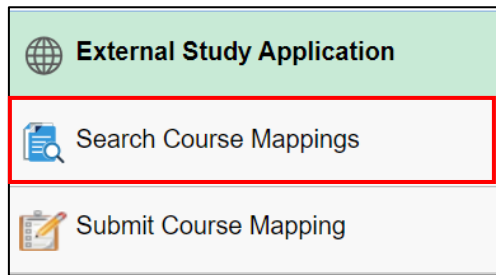
Look Up *Course Catalog Nbr						
2991	009860	1	4	Exchange Enrichment Course	Approved	01001ACAD1
2992	010719	1	4	Exchange Enrichment Course	Approved	01001ACAD1
3991	002056	1	4	Exchange Enrichment Course	Approved	01001ACAD1
3992	009970	1	4	Exchange Enrichment Course	Approved	01001ACAD1
3993	010676	1	4	Exchange Enrichment Course	Approved	01001ACAD1
3994	015994	1	2	Exchange Enrichment Course	Approved	01001ACAD1
2723	011845	1	2	Department Exchange Course	Approved	00104ACAD1
2731	013492	1	3	Department Exchange Course	Approved	00104ACAD1
2741	000858	1	4	Department Exchange Course	Approved	00104ACAD1
2742	000859	1	4	Department Exchange Course	Approved	00104ACAD1

To Search Course Mappings in EduRec

1. Navigate to **My Homepage > Academics > Global Education**.



2. If you wish to search for suitable course mappings for reference, select 'Search Course Mappings' on the left-hand menu.



3. Select the Faculty and Partner University you would like to see the course mappings using the search button:

Look Up Partner University

External Org ID begins with

Search Name contains

Organization Type begins with

[Basic Lookup](#)

Search Results

View 100 First 1-41 of 41 Last

External Org ID	Search Name	Organization Type	Description
E0000004524	BARTSTHELONDONSCHOFMED	SCHL	Barts &The London Sch of Med
E0000005883	BIRKBECKUNIVERSITYOFLONDON	SCHL	Birkbeck, University of London
E0000001181	CHARTINSTARBITRATORSLONDON	SCHL	Chart Inst Arbitrators London
E0000002474	CITYGUILDISOFLONDONINSTIT	SCHL	City & Guilds of London Instit
E0000001221	CITYOFLONDONPOLYTECHNIC	SCHL	City of London Polytechnic
E0000001263	CITYUNIVERSITYOFLONDON	SCHL	City, University of London
E0000005245	EASTLONDONNHSFOUNDATIONTRU	OTHR	East London NHS Foundation Tru
E0000004506	EVELINALONDONCHILDRENSHOSP	OTHR	Evelina London Children's Hosp
E0000002613	GOLDSMITHSUNIOFLONDON	SCHL	Goldsmiths, Uni of London
E0000001172	IMPERIALCOLLEGELONDON	SCHL	Imperial College London
E0000001200	KINGSCOLLEGELONDON	SCHL	King's College London

Search Course Mappings

For specific search, please provide the search parameters below before clicking on 'Fetch Mappings' button.

Faculty: Faculty of Science

Partner University: King's College London

Partner University to NUS Course Mappings													Personalize	Find	First	1-51 of 51	Last
Faculty	Partner University	PU Course 1	PU Course 1 Title	PU Crse1 Units	PU Course 2	PU Course 2 Title	PU Crse2 Units	NUS Course 1	NUS Course 1 Title	NUS Crse1 Units	NUS Course 2	NUS Course 2 Title	NUS Crse2 Units	Pre Approved?			
Faculty of Science	King's College London	4BBY1030	Cell Biology and Neuroscience	15.00				LSM3991	Exchange Enrichment Course	4.00				<input type="checkbox"/>			
Faculty of Science	King's College London	4CCP1905	Introduction to Modern Physics	15.00				PC1144		4.00				<input type="checkbox"/>			
Faculty of Science	King's College London	4CCY8050	Physics for Biomedical Engineering	15.00				PC1432	Physics IIE	4.00				<input type="checkbox"/>			
Faculty of Science	King's College London	4ZSS0160	Healthcare & Technology	4.00				LSM2996	Exchange Enrichment Course	2.00				<input type="checkbox"/>			
Faculty of Science	King's College London	4ZSS0166	Crime Scene & Forensic Science	7.50				LSM1306		4.00				<input type="checkbox"/>			
Faculty of Science	King's College London	4ZSS0167	Human Anatomy & Physiology	7.50				LSM2212	Human Anatomy	4.00				<input type="checkbox"/>			
Faculty of Science	King's College London	5AAH5001	Neuroscience and the Mind	15.00				LSM3991	Exchange Enrichment Course	4.00				<input type="checkbox"/>			
Faculty of Science	King's College London	5BBA2076	Emergence of Vertebrate Form and Function	15.00				LSM3991	Exchange Enrichment Course	4.00				<input type="checkbox"/>			